



Rho D Polyclonal Antibody

Catalog No	YP-Ab-16240
Isotype	IgG
Reactivity	Human;Rat;Mouse;
Applications	WB;ELISA;IHC
Gene Name	RHOD
Protein Name	Rho-related GTP-binding protein RhoD
Immunogen	The antiserum was produced against synthesized peptide derived from human RHOD. AA range:113-162
Specificity	Rho D Polyclonal Antibody detects endogenous levels of Rho D protein.
Formulation	Liquid in PBS containing 50% glycerol, 0.5% BSA and 0.02% sodium azide.
Source	Polyclonal, Rabbit,IgG
Purification	The antibody was affinity-purified from rabbit antiserum by affinity-chromatography using epitope-specific immunogen.
Dilution	WB 1:500-2000;IHC-p 1:50-300; ELISA 2000-20000
Concentration	1 mg/ml
Purity	≥90%
Storage Stability	-20°C/1 year
Synonyms	RHOD; ARHD; Rho-related GTP-binding protein RhoD; Rho-related protein HP1; RhoHP1
Observed Band	25kD
Cell Pathway	Cell membrane ; Lipid-anchor ; Cytoplasmic side . Early endosome . Colocalizes with RAB5 to early endosomes (By similarity). .
Tissue Specificity	Heart, placenta, liver, skeletal muscle, and pancreas and, with weaker intensity, in several other tissues.
Function	function:Involved in endosome dynamics. May coordinate membrane transport with the function of the cytoskeleton. Participates in reorganization of actin cytoskeleton.;similarity:Belongs to the small GTPase superfamily. Rho family.;subunit:In the GTP-bound form, interacts with DIAPH2 isoform 3.;tissue specificity:Heart, placenta, liver, skeletal muscle, and pancreas and, with weaker intensity, in several other tissues.;
Background	Ras homolog, or Rho, proteins interact with protein kinases and may serve as targets for activated GTPase. They play a critical role in muscle differentiation. The protein encoded by this gene binds GTP and is a member of the small GTPase superfamily. It is involved in endosome dynamics and reorganization of the actin cytoskeleton, and it may coordinate membrane transport with the function of the cytoskeleton. Two transcript variants encoding different isoforms have been found for this gene. [provided by RefSeq, Jul 2014],



matters needing attention

Avoid repeated freezing and thawing!

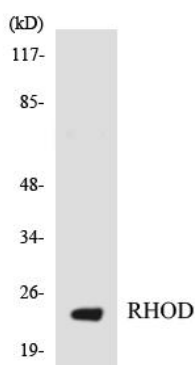
Usage suggestions

This product can be used in immunological reaction related experiments. For more information, please consult technical personnel.

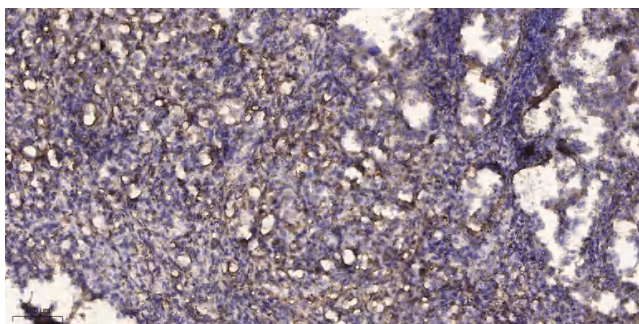
Products Images



Western Blot analysis of various cells using Rho D Polyclonal Antibody diluted at 1:500



Western blot analysis of the lysates from HT-29 cells using RHOD antibody.



Immunohistochemical analysis of paraffin-embedded human Squamous cell carcinoma of lung. 1, Antibody was diluted at 1:200(4° overnight). 2, Tris-EDTA,pH9.0 was used for antigen retrieval. 3,Secondary antibody was diluted at 1:200(room temperature, 45min).